

Review article

<https://doi.org/10.6065/apem.2019.24.1.2>
Ann Pediatr Endocrinol Metab 2019;24:2-14



Genetic regulation of linear growth

Shanna Yue, BA,
Philip Whalen, MS,
Youn Hee Jee, MD

Pediatric Endocrine, Metabolism and Genetics, Eunice Kennedy Shriver National Institute of Child Health and Human Development, National Institutes of Health, Bethesda, MD, USA

Linear growth occurs at the growth plate. Therefore, genetic defects that interfere with the normal function of the growth plate can cause linear growth disorders. Many genetic causes of growth disorders have already been identified in humans. However, recent genome-wide approaches have broadened our knowledge of the mechanisms of linear growth, not only providing novel monogenic causes of growth disorders but also revealing single nucleotide polymorphisms in genes that affect height in the general population. The genes identified as causative of linear growth disorders are heterogeneous, playing a role in various growth-regulating mechanisms including those involving the extracellular matrix, intracellular signaling, paracrine signaling, endocrine signaling, and epigenetic regulation. Understanding the underlying genetic defects in linear growth is important for clinicians and researchers in order to provide proper diagnoses, management, and genetic counseling, as well as to develop better treatment approaches for children with growth disorders.

Keywords: Linear growth, Genome-wide association study, Next generation sequencing, Short stature

Introduction

Height, as a measure of linear growth, is highly heritable, and genetics plays a major role in the regulation of linear growth.¹⁾ To understand the genetic mechanisms of linear growth, various efforts have been made for decades, and recently genome-wide approaches such as genome-wide association (GWA) studies or exome/whole genome sequencing have been performed successfully, identifying many genomic loci associated with height variation in the general population as well as identifying monogenic changes that cause either syndromic or isolated short stature or overgrowth/tall stature.²⁻⁴⁾ Combining these newly discovered findings obtained from genome-wide approaches into important growth-regulating genes, we now possess a better understanding of human growth disorders.⁴⁾ It is now understood that: (1) linear growth occurs at the growth plate and many genes that affect height variation or cause growth disorders play major roles in growth plate biology⁵⁾; (2) the type of mutation can determine the growth outcome; both loss or gain of function mutations can cause either short or tall stature. For example, loss-of-function mutations in *NPR2* cause short stature while gain-of-function mutations in the same gene cause tall stature.⁴⁾; (3) the severity of the genetic abnormality can determine the severity of disease. For example, for some genes, a biallelic mutation can cause severe skeletal dysplasia while a monoallelic mutation in the same gene can cause isolated short stature, as seen in *SHOX* deficiency or *ACAN* mutations.^{6,7)}; (4) lastly any genetic defect that alters the biology of chondrocytes in the growth plate can potentially cause growth disorders and these genetic defects can be very heterogeneous.⁴⁾

With recent remarkable advances in discoveries of genes responsible for regulating childhood growth disorders, it has become more important for pediatricians, pediatric endocrinologists and geneticists to understand the underlying genetic defects in children

Received: 6 January, 2019
Revised: 6 March, 2019
Accepted: 7 March, 2019

Address for correspondence:

Youn Hee Jee, MD
Pediatric Endocrine, Metabolism and Genetics, Eunice Kennedy Shriver National Institute of Child Health and Human Development, National Institutes of Health, CRC, Room 1-3330, 10 Center Drive MSC 1103, Bethesda, MD 20892-1103, USA
Tel: +1-301-435-5834
Fax: +1-301-402-0574
E-mail: jeeyh@mail.nih.gov
<https://orcid.org/0000-0001-7227-5925>

This is an Open Access article distributed under the terms of the Creative Commons Attribution Non-Commercial License (<http://creativecommons.org/licenses/by-nc/4.0>) which permits unrestricted non-commercial use, distribution, and reproduction in any medium, provided the original work is properly cited.

ISSN: 2287-1012(Print)
ISSN: 2287-1292(Online)

who present with growth concerns in order to provide genetic diagnoses, proper management, and genetic counseling. Therefore, this review aims to provide an update on genes known to cause human growth disorders specifically by focusing on those also found through GWA studies to be associated with normal height variation. The genes noted in this review are particularly important because single nucleotide polymorphisms (SNPs) in these genes (presumably causing mild changes) cause height variation in the normal range, but mutations (causing more deleterious changes) in the same gene cause distinctive linear growth disorders. Moreover, combined polymorphisms in these genes could potentially be genetic causes of isolated short stature in an oligo/polygenic manner. The listed genes reviewed here are categorized by their function in the growth plate with the mutations and their corresponding phenotype are described.

Growth regulating mechanisms

Linear growth occurs at the growth plate, a cartilaginous structure between the epiphysis and metaphysis (Fig. 1A). It is composed of 3 distinct layers; resting, proliferative and hypertrophic zones, which are temporally and spatially regulated (Fig. 1B).^{8,9} This regulation results in a unique differentiation process from resting chondrocytes to proliferating chondrocytes and finally hypertrophic chondrocytes. Ultimately, at the terminal zone of hypertrophic chondrocytes, hypertrophic chondrocytes undergo apoptosis and blood vessels invade, resulting in remodeling of the cartilage into newly formed bone.⁸ Constant repetition of this process produces new bone and leads to the elongation of bones. Many genes play a role in this process and so far, hundreds of genes have been implicated in either human growth disorders or height variation by affecting chondrogenesis at the growth plate.⁵

The growth mechanisms regulated by these genes can be divided into five different categories: (1) extracellular matrix, (2) intracellular signaling, (3) paracrine signaling, (4) endocrine signaling, and (5) epigenetic regulation (Fig. 1C).

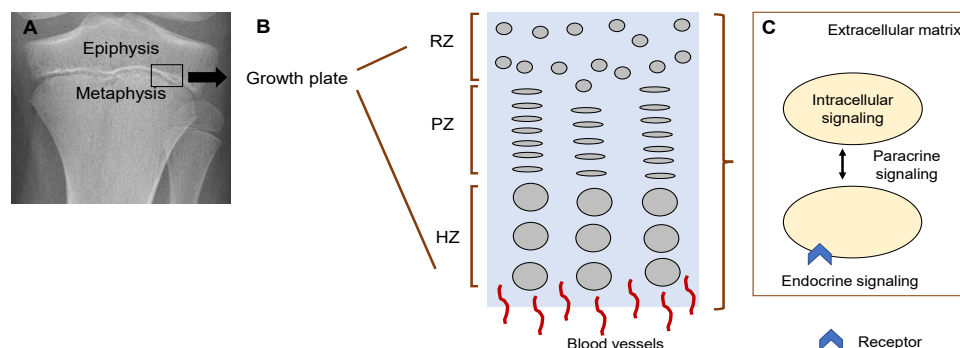


Fig. 1. Mechanisms regulating chondrocytes in the growth plate. (A) Growth plate on X-ray. Black box indicates where growth plate is located. (B) Diagram of the 3 layers in the growth plate. (C) Diagram of chondrocyte-regulating mechanisms. RZ, resting zone; PZ, proliferative zone; HZ, hypertrophic zone. Modified from Jee YH, et al. *Endocrinol Metab Clin North Am* 2017;46:259-81.¹¹⁵

1. Cartilage extracellular matrix

Growth plate chondrocytes secrete an extracellular matrix that is essential for proper functioning of the growth plate. The extracellular matrix consists of collagens, proteoglycans, and glycosaminoglycans and along with secreted growth factors and the modifying enzymes, extracellular matrix serves as a dynamic scaffold that supports and orients growth plate chondrocyte differentiation.¹⁰ Mutations in extracellular matrix-regulating genes can cause isolated short stature or severe skeletal dysplasia, supporting the idea that extracellular matrix plays a critical role in growth plate regulation in humans.¹¹

1) Aggrecan (ACAN)

Aggrecan, encoded by *ACAN*, is a chondroitin sulfate proteoglycan, one of the main components of the extracellular matrix in growth plate cartilage that has been shown to modulate hedgehog signaling in a mouse model.¹² In aggrecan-null mice, growth plates were devoid of matrix, showed abnormal chondrocyte organization and differentiation, and the expression of important growth plate regulatory genes such as *Col10a1*, *Sox9*, and *Ihh* was also affected.¹³ Therefore, alterations in the structure or function of aggrecan can significantly affect the growth plate cartilage resulting in a change in linear growth. Biallelic mutations in *ACAN* cause spondyloepimetaphyseal dysplasia and monoallelic mutations cause isolated short stature with or without advanced bone age causing early cessation of linear growth in most cases.^{6,14} Patients with mutations in *ACAN* may also present with premature and severe osteoarthritis and osteochondritis dissecans.^{15,16} Heterozygous *ACAN* mutations are one of common causes of idiopathic short stature; in a cohort of 428 patients with idiopathic short stature, 6 potential disease-causing heterozygous *ACAN* mutations were found (1.4% of patients).¹⁷ Thus, in children who have a family history of short stature and early-onset arthritis, *ACAN* mutations should be considered.

2) Fibrillins (*FBN1*)

Fibrillins are the major components of microfibrils in the extracellular matrix, and 2 genes in particular, fibrillin 1 (*FBN1*) and fibrillin 2 (*FBN2*), have been implicated in growth-regulating mechanisms, which regulate transforming growth factor beta (TGF- β) and bone morphogenetic factor (BMP) signaling in the extracellular matrix.^{3,18} Monoallelic mutations in *FBN1* give rise to acromelic dysplasia, a group of disorders that include Weill-Marchesani syndrome (WMS), acromicric dysplasia and gelophysic dysplasia.¹⁸

Latent transforming growth factor-beta-binding protein 2 (*LTBP2*) is an extracellular matrix protein, which is a member of superfamily composed of three fibrillins and four other LTBP proteins and also participates in the regulation of TGF- β release in the extracellular matrix. Therefore biallelic mutations in *LTBP2* can also cause WMS.¹⁹ Patients with WMS present with short stature with brachydactyly, stiff joints, muscular build, thick skin, ectopia lentis and cardiac valvular problems.^{18,20} Interestingly, mutations in *FBN1* can also result in Marfan syndrome, an autosomal dominant inherited connective tissue disorder.²¹ Individuals with Marfan syndrome have tall stature, skeletal and ocular abnormalities, and over 80% of Marfan syndrome patients have cardiovascular complications.²² Although it has been proposed that mis-assembled microfibrils leads to decreased extracellular matrix integrity and the mis-regulation of TGF β ligands leads to a Marfan syndrome phenotype, the precise mechanisms of how mutations in the same gene could cause 2 opposing phenotypes, short stature versus tall stature, is still unclear.^{23,24} Monoallelic mutations in fibrillin 2 (*FBN2*) have been reported to cause a Marfan-like disorder with tall stature and congenital contractural arachnodactyly, which further confirms the importance of microfibrils in the regulation of linear growth.²⁵ However, it is not known yet if other mutations in *FBN2* can also cause acromelic dysplasia.

3) Metalloproteinases (*ADAMTS17*)

Metalloproteinases are enzymes that degrade extracellular proteins. There are various kinds of metalloproteinases, such as matrix metalloproteinases (MMPs), a disintegrin and metalloproteinase (ADAMs), a disintegrin and metalloproteinase with thrombospondin motifs (ADALTSs) and ADAMTS-like proteins (ADAMTSLs). MMPs have been shown to

play an integral role in regulating chondrocyte proliferation, extracellular matrix degradation, and release of extracellular matrix proteins.²⁶ However, there have not yet been reports of mutations in MMP-encoding genes causing skeletal defects in humans, although there has been a case report of Winchester syndrome due to a hypomorphic mutation in *MMP14*.²⁷ The precise functions of these enzymes have not been well-established but many family members were identified by GWA studies to be associated with height variation (*ADAM28*, *ADAMTS19*, *ADAMTS2*, *ADAMTS3*, *ADAMTS6*, *ADAMTSL1*, *ADAMTSL3*) suggesting a possible role in linear growth. However, it is also possible that these genes may have been just innocent neighbors to other important genes associated with height variation. Among these, *ADAMTS17* has been recognized as a modulator of fibrillin microfibrils, and therefore it is not surprising that biallelic mutations in *ADAMTS17* cause Weill-Marchesani-like syndrome, where individuals present with short stature and spherophakia, but do not have brachydactyly and joint stiffness.²⁸⁻³⁰

4) Collagens (*COL9A2*, *COL11A1*, *COL27A1*) and matrilin 3 (*MATN3*)

Cartilage fibrils are complex structures containing collagens II and XI with or without collagen IX and collagen XVI.³¹ These, together with other fibrils containing small leucine-rich proteins or proteoglycans, such as decorin, biglycan and fibromodulin, make up the fibrillar matrix.¹¹ The interaction of the fibrillar and extrafibrillar matrix then form a fibrillar periphery.³¹ *COL11A1* and *COL27A1* are important for the organization of the proliferative zone, play a structural role in the pericellular extracellular matrix of the growth plate, and are thought to be important for the transition of cartilage to bone.³²⁻³⁴ Mutations in these proteins underlie a broad spectrum of skeletal dysplasias (Table 1). Monoallelic mutations in *COL2A1*, *COL11A1*, *COL11A2*, *COL9A1*, *COL9A2*, and *COL9A3* genes cause Stickler syndrome.³⁵ Heterozygous mutations in *COL11A1* have also been implicated in Marshall syndrome, a chondrodysplasia that is phenotypically very similar to Stickler syndrome. There is some debate as to whether these disorders are separate entities or different expressions of the same disorder. They present with chondrodysplasias characterized by midfacial hypoplasia, myopia, sensorineural-hearing deficits, and short stature in the patient relative to their unaffected family

Table 1. Genetic causes of linear growth disorders

Gene	Protein	Disorders	Clinical presentation	Height-associated SNP ID ^{2,3}
Extracellular matrix				
<i>ACAN</i>	Aggrecan	Isolated short stature (monoallelic)	Short stature with or without advanced bone age, short legs, long arms, midface hypoplasia, osteochondritis dissecans ¹⁴⁻¹⁶	rs2280470, rs3817428, rs11633371, rs16942341
		Spondyloepimetaphyseal dysplasia (biallelic)	Extreme short stature, increased upper/lower segment ratio, rhizomelia, mesomelia, brachydactyly, midface hypoplasia, short neck, lumbar lordosis, early onset arthritis ^{6,15}	

Table 1. Genetic causes of linear growth disorders (continued)

Gene	Protein	Disorders	Clinical presentation	Height-associated SNP ID ^{2,3)}
<i>ADAMTS17</i>	ADAM metallopeptidase with thrombospondin type 1 Motif 17	Weill-Marchesani syndrome (biallelic)	Short stature without brachydactyly and joint stiffness, short hands and feet, spherophakia, myopia, cataract, thick skin ²⁷⁻²⁹⁾	rs2573625, rs4246302, rs4548838
<i>COL9A2</i>	Collagen type IX alpha 2 chain	Multiple epiphyseal dysplasia (monoallelic) Stickler syndrome (biallelic)	Short stature, early onset osteoarthritis, brachydactyly ^{41,42)}	rs209918
<i>COL11A1</i>	Collagen type XI alpha 1 chain	Stickler syndrome, Marshall syndrome (monoallelic) Fibrochondrogenesis 1 (biallelic)	Short stature, midface hypoplasia, short nose, myopia, sensorineural-hearing deficits ³⁴⁻³⁶⁾ Short-limbed skeletal dysplasia, flat midface, small nose with anteverted nares, relatively normal hands and feet, small thorax ³⁷⁾	rs7517682
<i>COL27A1</i>	Collagen type XXVII alpha 1 chain	Steel syndrome (biallelic)	Short stature, bilateral hip and radial head dislocations, scoliosis, carpal coalitions, <i>pes cavus</i> , facial dysmorphism (long oval face, prominent forehead, hypertelorism, broad nasal bridge) ³⁸⁻⁴⁰⁾	rs999599
<i>FBN1</i>	Fibrillin 1	Acromelic dysplasia; Weill-Marchesani syndrome, acromicric dysplasia, gelophysic dysplasia (monoallelic) Marfan syndrome (monoallelic)	Short stature, spherophakia, brachydactyly, joint stiffness, thick skin, cardiac valvular abnormalities ⁷⁾ Tall stature, arachnodactyly, dolichostenomelia, joint hypermobility, ectopia lentis, aortic root enlargement, aortic dissection ²⁰⁻²³⁾	rs1036477
<i>FBN2</i>	Fibrillin 2	Marfan like-disorder (monoallelic)	Tall stature, congenital contractural arachnodactyly, dolichostenomelia, joint hypermobility, without ocular or cardiac manifestations ²⁴⁾	rs26024
<i>LTBP2</i>	Latent transforming growth factor beta binding protein 2	Weill-Marchesani syndrome (biallelic)	Short stature, brachydactyly, joint stiffness, short hands and feet, spherophakia, myopia, cataract, thick skin ¹⁸⁾	rs862034, rs10140101
<i>MATN3</i>	Matrilin-3	Multiple epiphyseal dysplasia (monoallelic) Spondyloepimetaphyseal dysplasia (biallelic)	Short stature, early onset osteoarthritis, brachydactyly ⁴³⁾ disproportionate early-onset dwarfism, bowing of lower limbs, lumbar lordosis, and normal hands, abnormal skeletal X-rays (short, wide, and stocky long bones with severe epiphyseal and metaphyseal changes, hypoplastic iliac bones, and flat-ovoid vertebral bodies) ⁴⁵⁾	rs52826764
Intracellular signaling				
<i>CREBBP</i>	CREB (cAMP response element-binding protein) binding protein	Rubinstein-Taybi syndrome (monoallelic)	Short stature, intellectual disability, broad and deviated thumbs and halluces, distinct craniofacial characteristics ^{52,53)}	rs129963
<i>GNAS</i>	Guanine nucleotide binding protein, alpha stimulating subunit	Albright's hereditary osteodystrophy with hormone resistance-pseudohypoparathyroidism (monoallelic, maternally inherited) Albright's hereditary osteodystrophy without hormone resistance-pseudohypoparathyroidism (monoallelic, paternally inherited)	Short stature, brachydactyly, rounded face, short neck, centripetal obesity, developmental delay, subcutaneous ossifications, multihormonal resistance to PTH, TSH and gonadotropins ^{50,51)} Short stature, brachydactyly, rounded face, short neck, subcutaneous ossification ^{50,51)}	rs2057291
<i>PDE3A</i>	Phosphodiesterase 3A	Mendelian hypertension with brachydactyly type E (monoallelic)	Short stature, brachydactyly, salt-independent and age-dependent hypertension, an increased fibroblast growth rate, and other cardiovascular complications ^{54,55)}	rs4326884

Table 1. Genetic causes of linear growth disorders (continued)

Gene	Protein	Disorders	Clinical presentation	Height-associated SNP ID ^(2,3)
<i>SOX9</i>	SRY-box 9	Campomelic dysplasia (monoallelic)	Congenital bowing of long bones, with or without sex reversal ^(46,47)	rs10083886
Paracrine signaling				
<i>GDF5</i>	Growth differentiation factor 5 (cartilage-derived morphogenic protein 1)	Brachydactyly, type A1, A2, C (monoallelic)	Short stature and brachydactyly ⁽⁷⁵⁻⁷⁷⁾	rs143384
		Chondrodysplasia - Grebe type (biallelic)	Severe dwarfism with micromelia, deformation of limbs, disproportionate short stature, brachydactyly ^(77,78)	
		Chondrodysplasia - Hunter-Thompson type (biallelic)	Short long bones (most severe in hands and feet), joint dislocations, normal craniofacial skeleton ⁽⁷⁹⁾	
<i>IGF2</i>	Insulin-like growth factor II	Growth restriction (monoallelic)	Paternally inherited, pre- and postnatal growth restriction with the features of Silver-Russell syndrome ⁽⁸⁷⁾	rs4320932
<i>IHH</i>	Indian hedgehog	Brachydactyly type A1 (monoallelic)	Shortening of the metacarpals or metatarsals, and short stature ^(57,58)	rs142036701
		Acrocapitofemoral dysplasia (biallelic)	Short stature with short limbs, shortening of the metacarpals or metatarsals, thorax deformities, cone-shaped epiphyses in hands and femur head ⁽⁵⁹⁾	
<i>NPPC</i>	C-type natriuretic peptide	Isolated short stature (monoallelic, loss-of-function mutation)	Short stature ⁽⁶⁴⁾	rs749052
		Overgrowth (<i>NPPC</i> overexpression)	Tall stature, long halluces, spine and joint deformities, Marfanoid habitus ⁽⁶⁶⁾	
<i>NPR2</i>	Natriuretic peptide receptor B	Isolated short stature (monoallelic)	Isolated short stature ⁽⁶⁵⁾	rs3763631
		Acromesomelic dysplasia, Maroteaux type (biallelic)	Severe short stature, short bowing limbs, phalangeal-metacarpal abnormalities, brachydactyly of hands and feet ⁽⁷⁰⁾	
		Overgrowth (gain-of-function mutation, monoallelic)	Tall stature, macrodactyly of big toes ⁽⁶⁷⁾	
<i>PTH1R</i>	PTH/PTH-related peptide receptor, type 1	Blomstrand chondrodysplasia (loss-of-function mutation, biallelic)	Extremely advanced endochondral bone maturation, increased bone density, ⁽⁶¹⁾	rs121434601
		Jansen's metaphyseal chondrodysplasia (gain-of-function mutation, monoallelic)	Short-limbed dwarfism, hypercalcemia and hypophosphatemia, normal or undetectable PTH and PTHrP ⁽⁶²⁾	
<i>PTHLH</i>	Parathyroid hormone-related peptide	Brachydactyly type E (monoallelic)	Short stature, shortening of the metacarpals or metatarsals ⁽⁶⁰⁾	rs10492364
<i>WNT5A</i>	Wnt family member 5A	Robinow syndrome (monoallelic)	Short stature, limb shortening, genital hypoplasia, mandibular hypoplasia, hypertelorism ^(84,85)	rs2034172
Endocrine signaling				
<i>CYP19A1</i>	Aromatase (cytochrome p450 family 19 subfamily A member 1)	Aromatase excess syndrome (monoallelic)	Short stature, gynecomastia in males, macromastia in females ⁽⁹⁸⁾	rs16964211
		Aromatase deficiency (biallelic)	Tall stature compared to midparental height, delayed bone age, delayed puberty, ambiguous genitalia at birth, elevated androgens, low estrogen ^(96,97)	

Table 1. Genetic causes of linear growth disorders (continued)

Gene	Protein	Disorders	Clinical presentation	Height-associated SNP ID ^{2,3)}
<i>ESR1</i>	Estrogen receptor	Estrogen resistance (biallelic)	Tall stature (variable), estrogen insensitivity, delayed skeletal maturation, no breast development in women ^{99,100)}	rs3020418, rs6902771
<i>IGF1R</i>	Insulin-like growth factor I receptor	Isolated short stature (monoallelic)	Small for gestational age, short stature ⁹⁰⁾	rs2871865
		Prenatal and postnatal growth failure (biallelic)	Intrauterine growth retardation, severe postnatal growth failure, microcephaly, developmental delay ⁹¹⁾	
<i>PIK3R1</i>	Phosphoinositide-3-kinase regulatory subunit 1	SHORT syndrome (monoallelic)	Short stature, hyperextensibility of joints, ocular defect (Rieger anomaly), lipodystrophy, insulin resistance, low birth weight, delayed bone age, triangular facies, hypoplastic nasal alae, low set ears ⁹³⁻⁹⁵⁾	rs9291926
Epigenetic regulation				
<i>DNMT3A</i>	DNA methyltransferase 3 alpha	DNMT3A syndrome (monoallelic)	Tall stature, intellectual disability, round face, heavy and horizontal eyebrows, narrow palpebral fissures ^{103,104)}	rs2289195, rs10460566
<i>EZH2</i>	Enhancer of Zeste homolog 2	Weaver syndrome (monoallelic)	Tall stature, advanced bone age, macrocephaly, hypertelorism, retrognathia, variable learning disability ^{106,107)}	rs822531
<i>HIST1H1E</i>	H1 histone family, member 4	Rahman syndrome (monoallelic)	Variable stature, intellectual disability and head circumference, facial dysmorphism (full cheeks, high hairlines, telecanthus) ¹⁰⁵⁾	rs4141885
<i>NSD1</i>	Nuclear receptor binding SET domain protein 1	Sotos syndrome (monoallelic)	Overgrowth, advanced bone age, macrocephaly, pointed chin, receding hairline, downslanting palpebral fissures, intellectual disability, brain anomalies, seizures ¹⁰⁹⁾	rs11950938, rs12055154
		Beckwith-Weidemann syndrome (monoallelic)	Overgrowth, ear and renal anomalies, macroglossia, abdominal wall defects, visceromegaly, embryonic tumors, hemihyperplasia, neonatal hypoglycemia ¹¹¹⁾	
<i>SETD2</i>	SET domain containing 2	Sotos syndrome (monoallelic)	Overgrowth, macrocephaly, finical dysmorphism, long and large hands and feet, advanced bone age, mild intellectual disability ¹¹⁰⁾	rs76208147

SNP, single nucleotide polymorphism; PTH, parathyroid hormone; TSH, thyroid-stimulating hormone.

members.³⁶⁻³⁸⁾ On the other hand, biallelic mutations cause fibrochondrogenesis 1, a skeletal dysplasia presenting with short limbs, flat midface and protrudent abdomen.³⁹⁾ Furthermore, biallelic mutations in *COL27A1* cause Steel syndrome.⁴⁰⁻⁴²⁾ The main clinical features of this disorder are bilateral hip and radial head dislocations, scoliosis, short stature, carpal coalitions, and *pes cavus*, with some patients also having facial dysmorphism.⁴²⁾ Patients with monoallelic mutations in *COL9A2* and *MATN3* can present with multiple epiphyseal dysplasia, a clinically variable disease characterized by short stature and early onset osteoarthritis.⁴³⁻⁴⁵⁾ Conversely, biallelic mutations in *COL9A2* and *MATN3* cause a more severe form of skeletal dysplasia.^{44,47)}

2. Intracellular signaling

Various intracellular signaling pathways have been recognized as causative factors of linear growth impairment, and mutations in intracellular signaling have been identified to

significantly impair linear growth. However, surprisingly, not many SNPs in these genes were identified to be associated with height variation. It may be because not all the functions of identified genes are well-established or the functions of these genes may be too critical and essential, such as transcriptional regulation, cyclic AMP (cAMP) production, and DNA repair, therefore preventing frequent changes (SNPs) that can affect linear growth.

1) Transcriptional regulation (*SOX9*)

SOX9 is a critical transcriptional factor for sex development during embryogenesis and for skeletal development and also plays an important role in chondrogenesis at the growth plate by regulating chondrocyte differentiation.^{48,49)} In humans, dominant mutations in *SOX9* cause campomelic dysplasia (which means "bent limb" in Greek) with or without sex reversal.^{48,49)}

2) G protein alpha-subunit (*GNAS*), cAMP pathway (*CREBBP*, *PDE3A*)

The parathyroid hormone-related protein-Indian hedgehog (PTHrP-IHH) negative feedback loop is a major regulator of chondrogenesis in the growth plate, and PTHrP acts through the PTH1 receptor which activates both Gs and Gq family heterotrimeric G proteins.⁵⁰ The activation of Gs leads to cAMP production and protein kinase A (PKA) activation, and subsequent phosphorylation of the cAMP response element-binding (CREB) family of transcription factors.⁵¹

GNAS encodes the G protein alpha-subunit (Gs alpha), which, when activated, increases cAMP production to mediate downstream signaling.⁵² Impairment of the cAMP signaling pathway through heterozygous loss-of-function mutations in Gs alpha leads to Albright's hereditary osteodystrophy (AHO) with or without hormone resistance. Maternal inheritance of Gs alpha mutations leads to AHO and pseudohypoparathyroidism type 1a (PHP1a), which can include multihormone resistance, while patients with paternally inherited mutations of Gs alpha have only the AHO phenotype, termed pseudopseudohypoparathyroidism.⁵² Phenotypically, patients with AHO present with short stature, brachydactyly, rounded face, and short neck.⁵³ Patients who have both AHO and PHP1a also have multihormone resistance to PTH, TSH, and gonadotropins, all of which act through G-protein-coupled receptors.⁵² *CREBBP* encodes a nuclear transcriptional coactivator protein, CREB (cAMP-response element binding protein)-binding protein, that binds specifically to the PKA-phosphorylated form of the CREB protein. Rubinstein-Taybi syndrome (RSTS) is a rare condition characterized by short stature, intellectual disability, broad and deviated thumbs and halluces, and distinct craniofacial characteristics.⁵⁴ Over 65% of cases of RSTS are caused by dominant mutations in *CREBBP*.⁵⁵

PDE3A encodes a cyclic GMP (cGMP) and AMP (cAMP) phosphodiesterase 3A. Missense mutations in *PDE3A* have been shown to cause Mendelian hypertension and brachydactyly type E in seven unrelated families.^{56,57} This syndrome has symptoms of short stature, brachydactyly, salt-independent and age-dependent hypertension, an increased fibroblast growth rate, and other cardiovascular complications. The identified mutations increase PKA-mediated *PDE3A* phosphorylation and increase cAMP-hydrolytic activity, thereby decreasing cAMP production.⁵⁶

3. Paracrine signaling pathways

Paracrine factors, such as fibroblast growth factors (FGFs), C-type natriuretic peptide (CNP), IHH, PTHrP encoded by *PTH1LH*, and BMPs, play many critical roles in the growth plate, including chondrocyte proliferation, differentiation, hypertrophy, and matrix assembly.⁸ Mutations in these genes have been identified to cause certain growth disorders with unique phenotype.

1) IHH-PTHrP pathway (*IHH*, *PTH1LH*, *PTH1R*)

In the growth plate, IHH-PTHrP participates in a negative feedback loop that modulates chondrocyte differentiation.⁵⁸ Therefore, mutations in *IHH*, *PTH1LH*, and the PTHrP receptor, *PTH1R*, result in disorders that affect skeletal growth. Mutations in *IHH* lead to brachydactyly type A1 and acrocapitofemoral dysplasia, and also can present with isolated short stature.⁵⁹⁻⁶¹ Mutations in *PTH1LH* cause brachydactyly type E with short stature and the most prominent symptoms of these disorders are shortening of the metacarpals or metatarsals and short stature.⁶² Loss-of-function mutations in *PTH1R* cause Blomstrand chondrodysplasia and gain-of-function mutations cause Jansen's metaphyseal chondrodysplasia, both of which are characterized primarily by short-limbed dwarfism.^{63,64}

2) CNP-NPR2 Pathway (*NPPC*, *NPR2*)

The CNP is encoded by the *NPPC* gene and exerts its effects through the natriuretic peptide receptor B (NPR-B) encoded by *NPR2*.⁶⁵ Loss of function mutations in *NPPC* and *NPR2* cause short stature, while overexpression in *NPPC* or gain-of-function mutations in *NPR2* cause overgrowth.⁶⁶⁻⁶⁹ Binding of CNP to NPR-B stimulates guanylyl cyclase activity, increasing the synthesis of cGMP and activating the type 2 cGMP-dependent protein kinase, which then inhibits the MAPK pathway and antagonizes FGFR signaling.^{70,71} Because FGFR signaling induces growth arrest of chondrocytes, CNP promotes chondrocyte proliferation. Biallelic *NPR2* mutations cause acromesomelic dysplasia, Maroteaux type (AMDM), an autosomal recessive skeletal dysplasia characterized by severe short stature and short limbs.⁷² Multiple mutations causing loss of function in NPR-B have been associated with AMDM. Nonsense mutations in the intracellular kinase homology domain (KHD) of NPR-B lead to impaired cGMP production, providing evidence that this domain is essential for skeletal growth.^{73,74} Gain-of-function mutations in the *NPR2* gene have also been described, and these patients have tall stature and macrodactyly of the big toes.^{69,74,75} It has been shown that a gain-of-function mutation in the KHD domain of NPR-B results in an increase in cGMP activity compared to the wild-type protein.⁷⁶

3) TGF- β signaling (*GDF5*)

The *GDF5* gene encodes growth differentiation factor 5 (also known as cartilage-derived morphogenetic protein) which acts through BMP receptors. Mutations in this gene can cause brachydactyly (type A1, A2, and C) with short stature, chondrodysplasia - Grebe type, characterized by severe dwarfism, disproportionate short stature, and brachydactyly, and Hunter-Thompson type, characterized by skeletal abnormalities that are restricted to the limbs and limb joints.⁷⁷⁻⁸¹ Early studies showed that *GDF5* is primarily expressed in long bones during human embryonic development⁸² and recent studies revealed that *GDF5* enhances cartilage formation and *GDF5* and TGF β synergistically induce mesenchymal stem cell differentiation into chondrocytes, providing evidence for its important role in

cartilage development.^{83,84}

4) WNT signaling (*WNT5A*)

The canonical WNT signaling pathway is important for cell proliferation and cell fate change during development. Studies in *Wnt5a*-null mice showed a defect in cell polarization in the growth plate.⁸⁵ Dominant mutations in *WNT5A* are associated with Robinow syndrome, a disorder characterized by short stature, limb shortening, genital hypoplasia, and craniofacial abnormalities.^{86,87}

5) *IGF2*

IGF2 encodes insulin-like growth factor 2, an important fetal growth factor that binds to the type 1 IGF receptor to regulate cell proliferation. Recently, studies showed that growth plates in *Igf2*-null mice show a disproportionately larger hypertrophic zone and delayed secondary ossification center, and, in humans, paternally inherited mutations in *IGF2* in human cause postnatal growth failure in addition to prenatal growth.^{88,89} The dysmorphic features of affected family members were similar to those of individuals with IGF-2 deficiency seen in Silver-Russell syndrome.⁸⁹ *IGFBP2BP2* and *IGF2BP3*, encoding the IGF2 binding proteins, are identified to be associated with height variation but mutations have not yet been found in human disorders.

4. Endocrine signaling

Endocrine signaling pathways are the clinical causes most extensively evaluated in children who present with short stature since endocrine causes and hormonal abnormalities are relatively easily tested in clinical practice. Growth hormone, thyroid hormone, glucocorticoids, and sex steroids affect chondrocyte proliferation and hypertrophy in the growth plate, altering linear growth if there is a defect in the corresponding axis.

1) GH-IGF1 axis (*IGF1R*)

The GH-IGF1 axis is one of the main regulatory systems that controls chondrogenesis in the growth plate, whereby GH acts directly on the growth plate to stimulate chondrogenesis or indirectly through circulating and local insulin-like growth factor-1 (IGF-1).^{90,91} There have been multiple genes identified that cause growth hormone deficiency or impair downstream signaling of the GH-IGF1 axis. For the scope of this review, only genes identified by GWA studies are mentioned. Mutations in the IGF-1 receptor gene, *IGF1R*, can cause both prenatal and postnatal growth failure. Monoallelic mutations may cause short stature in children born small for gestational age.⁹² Biallelic mutations cause severe short stature.⁹³ Fibroblast cultures from these patients showed decreased IGF1R function and a reduced number of IGF1 receptors, which could lead to IGF1 insensitivity.⁹³ SNPs in *IGFBP3*, *IGFBP4*, *STC2*, *PAPPA*, *PAPPA2*, which regulate the free form of IGF-1 by functioning

as a binding protein (*IGFBP3*, *IGFBP4*), binding-protein-cleaving enzymes (*PAPPA*, *PAPPA2*), or as a regulator of *PAPPA* (*STC2*), have been identified by GWA studies to be associated with height variation, likely by affecting IGF-1 bioavailability and therefore the GH-IGF1 axis. However, only mutations in *PAPPA2*, encoding Pappalysin-2, a protein that cleaves IGFBP-3 and -5, have been identified in humans where the patients have decreased free IGF-1 levels.⁹⁴

2) Insulin signaling (*PIK3R1*)

PIK3R1 is a gene involved in insulin signaling. Patients with mutations in *PIK3R1* have SHORT syndrome, hallmarks of which include short stature, hyperextensibility of joints, ocular depression, Rieger anomaly, teething decay, and insulin resistance.⁹⁵⁻⁹⁷ However, the role of *PIK3R1* in the growth plate is not yet known.

3) Aromatase (*CYP19A1*)

Estrogen plays an important role in skeletal maturation and mineralization, and defects in estrogen signaling can lead to a variety of disorders that manifest with short or tall stature by altering the timing of growth plate senescence.⁹⁸ Since estrogen normally accelerates growth plate senescence and skeletal maturation, children with aromatase deficiency, a rare autosomal recessive disorder caused by mutations in the *CYP19A1* gene, present with delayed bone age and delayed puberty which lead to tall stature. This presentation is due to a lack of estrogen converted from androgen.^{99,100} On the other hand, overexpression of *CYP19A1* can result in aromatase excess syndrome. Affected adults present with short stature, gynecomastia in males, and macromastia in females.¹⁰¹ Patients with mutations in the estrogen receptor gene *ESR1* have estrogen resistance. To date, there have been 5 patients described who have mutations in *ESR1*, with varying phenotypes and varying degrees of estrogen insensitivity, likely due to different mutation sites and differences in penetrance of the particular mutation.^{102,103} However, all patients had delayed skeletal maturation, with some having tall stature in adulthood also due to a lack of estrogen effects on the growth plate.¹⁰⁴

5. Epigenetic control of height (*DNMT3A*, *HIST1H1E*, *EZH2*, *NSD1*, *SETD2*)

DNA and histone methylation are one of the main gene regulatory mechanisms and play crucial roles in growth and development. The best example of epigenetic regulation of growth is the epimutations in the telomeric imprinting control region 1 (ICR1), which alters *H19* and *IGF2* expression. Hypermethylation of the ICR1 causes biallelic expression of *IGF2* presenting as Beckwith-Wiedemann syndrome (BWS) (overgrowth) while hypomethylation of the ICR1 causes suppression of *IGF2* expression presenting as Silver-Russell syndrome (short stature).¹⁰⁵ Moreover, many genes involved in DNA methylation have been identified to cause growth

disorders, especially overgrowth syndromes. Studies have found *de novo* mutations in *DNMT3A*, a gene that encodes a DNA methyltransferase, which establishes methylation during embryogenesis.¹⁰⁶ These mutations cause an overgrowth syndrome called DNMT3A syndrome. Patients present with tall stature, intellectual disability, and distinctive facial appearance with a round face, heavy, horizontal eyebrows, and narrow palpebral fissures.^{106,107} In addition to DNA methylation, histone methylation has been implicated in growth disorders. *HIST1H1E* encodes histone H1.4, and in humans, H1.4 mediates the formation of higher-order chromatin structures, thus regulating the accessibility of histone modification factors, regulatory proteins, and chromatin modifiers to target sites on this chromatin structure.¹⁰⁸ Mutations in this gene cause Rahman syndrome. Individuals with this disease have overgrowth with varying degrees of intellectual disability and a distinctive facial appearance in childhood - full cheeks, high hairlines, and telecanthus.¹⁰⁸ Additionally, monoallelic mutations in genes that encode other histone methyltransferases cause Weaver syndrome and Sotos syndrome. Weaver syndrome is caused by mutations in *EZH2* (Enhancer of Zeste homolog 2).^{109,110} This gene encodes a histone methyltransferase that is part of the polycomb repressive complex 2, which catalyzes the methylation of lysine residue 27 of histone 3 (H3K27), thus causing transcriptional repression.¹¹¹ Patients with Weaver syndrome have tall stature, advanced bone age, dysmorphic facial features, and variable learning disability.^{109,110} Sotos syndrome is another overgrowth syndrome characterized by overgrowth, advanced bone age, dysmorphic facial features, and intellectual disability, and patients with Sotos syndrome also often have brain anomalies and seizures.¹¹² However, in contrast to Weaver syndrome, Sotos syndrome and Sotos-like syndrome are caused by mutations in genes that cause transcriptional activation: *NSD1* and *SETD2*.^{112,113} These 2 genes encode histone methyltransferases which catalyze the methylation of histone 3 lysine 36 to allow for transcriptional activation.^{112,113} Interestingly, mutations in *NSD1* have been detected in 2 patients with BWS, another overgrowth condition characterized by macroglossia, abdominal wall defects, visceromegaly, embryonic tumors, hemihyperplasia, and neonatal hypoglycemia.¹¹⁴

Conclusion

In this review, we reviewed the genes that cause linear growth disorders in humans, focusing on their functions at the growth plate and their clinical phenotype. These genes are also identified by GWA studies which suggest that a mild change of function or expression in these genes may modulate linear growth within the normal ranges. The genetic evidence supports the idea that genes causing linear growth are highly heterogeneous, so that any regulatory mechanisms that alter chondrogenesis in the growth plate could be the genetic cause of growth disorders, either syndromic or isolated. With the aid of genome-wide approaches, it is expected that additional

regulating mechanisms in growth disorders will be discovered and broaden our knowledge of the underlying causes of these disorders.

Conflicts of interest

No potential conflict of interest relevant to this article was reported.

Acknowledgments

This work was supported by the Intramural Research Program of the Eunice Kennedy Shriver National Institute of Child Health and Human Development, NIH (ZIA HD000640).

References

1. Lango Allen H, Estrada K, Lettre G, Berndt SI, Weedon MN, Rivadeneira F, et al. Hundreds of variants clustered in genomic loci and biological pathways affect human height. *Nature* 2010;467:832-8.
2. Chan Y, Salem RM, Hsu YH, McMahon G, Pers TH, Vedantam S, et al. Genome-wide analysis of body proportion classifies height-associated variants by mechanism of action and implicates genes important for skeletal development. *Am J Hum Genet* 2015;96:695-708.
3. Marouli E, Graff M, Medina-Gomez C, Lo KS, Wood AR, Kjaer TR, et al. Rare and low-frequency coding variants alter human adult height. *Nature* 2017;542:186-90.
4. Baron J, Säwendahl L, De Luca F, Dauber A, Phillip M, Wit JM, et al. Short and tall stature: a new paradigm emerges. *Nat Rev Endocrinol* 2015;11:735-46.
5. Lui JC, Nilsson O, Chan Y, Palmer CD, Andrade AC, Hirschhorn JN, et al. Synthesizing genome-wide association studies and expression microarray reveals novel genes that act in the human growth plate to modulate height. *Hum Mol Genet* 2012;21:5193-201.
6. Tompson SW, Merriman B, Funari VA, Fresquet M, Lachman RS, Rimoin DL, et al. A recessive skeletal dysplasia, SEMD aggrecan type, results from a missense mutation affecting the C-type lectin domain of aggrecan. *Am J Hum Genet* 2009;84:72-9.
7. Nilsson O, Guo MH, Dunbar N, Popovic J, Flynn D, Jacobsen C, et al. Short stature, accelerated bone maturation, and early growth cessation due to heterozygous aggrecan mutations. *J Clin Endocrinol Metab* 2014;99:E1510-8.
8. Kronenberg HM. Developmental regulation of the growth plate. *Nature* 2003;423:332-6.
9. Lui JC, Andrade AC, Forcinito P, Hegde A, Chen W, Baron J, et al. Spatial and temporal regulation of gene expression in the mammalian growth plate. *Bone* 2010;46:1380-90.
10. Melrose J, Shu C, Whitelock JM, Lord MS. The cartilage extracellular matrix as a transient developmental scaffold

- for growth plate maturation. *Matrix Biol* 2016;52-54:363-83.
11. Myllyharju J. Extracellular matrix and developing growth plate. *Curr Osteoporos Rep* 2014;12:439-45.
 12. Cortes M, Baria AT, Schwartz NB. Sulfation of chondroitin sulfate proteoglycans is necessary for proper Indian hedgehog signaling in the developing growth plate. *Development* 2009;136:1697-706.
 13. Lauing KL, Cortes M, Domowicz MS, Henry JG, Baria AT, Schwartz NB. Aggrecan is required for growth plate cytoarchitecture and differentiation. *Dev Biol* 2014;396:224-36.
 14. Tatsi C, Gkourogianni A, Mohnike K, DeArment D, Witchel S, Andrade AC, et al. Aggrecan mutations in nonfamilial short stature and short stature without accelerated skeletal maturation. *J Endocr Soc* 2017;1:1006-11.
 15. Gleghorn L, Ramesar R, Beighton P, Wallis G. A mutation in the variable repeat region of the aggrecan gene (*AGC1*) causes a form of spondyloepiphyseal dysplasia associated with severe, premature osteoarthritis. *Am J Hum Genet* 2005;77:484-90.
 16. Stattin EL, Wiklund F, Lindblom K, Onnerfjord P, Jonsson BA, Tegner Y, et al. A missense mutation in the aggrecan C-type lectin domain disrupts extracellular matrix interactions and causes dominant familial osteochondritis dissecans. *Am J Hum Genet* 2010;86:126-37.
 17. Hauer NN, Sticht H, Boppudi S, Büttner C, Kraus C, Trautmann U, et al. Genetic screening confirms heterozygous mutations in *ACAN* as a major cause of idiopathic short stature. *Sci Rep* 2017;7:12225.
 18. Sakai LY, Keene DR. Fibrillin protein pleiotropy: Acromelic dysplasias. *Matrix Biol* 2018 Sep 13 [Epub]. pii: S0945-053X(18)30312-3. <https://doi.org/10.1016/j.matbio.2018.09.005>.
 19. Haji-Seyed-Javadi R, Jelodari-Mamaghani S, Paylakhi SH, Yazdani S, Nilforushan N, Fan JB, et al. *LTBP2* mutations cause Weill-Marchesani and Weill-Marchesani-like syndrome and affect disruptions in the extracellular matrix. *Hum Mutat* 2012;33:1182-7.
 20. Kojuri J, Razeghinejad MR, Aslani A. Cardiac findings in Weill-Marchesani syndrome. *Am J Med Genet A* 2007;143A:2062-4.
 21. Grau U, Klein HG, Detter C, Mair H, Welz A, Seidel D, et al. A novel mutation in the neonatal region of the fibrillin (*FBN1*) gene associated with a classical phenotype of Marfan syndrome (MFS). *Mutations in brief no. 163*. Online. *Hum Mutat* 1998;12:137.
 22. Cook JR, Ramirez F. Clinical, diagnostic, and therapeutic aspects of the Marfan syndrome. *Adv Exp Med Biol* 2014;802:77-94.
 23. Park JW, Yan L, Stoddard C, Wang X, Yue Z, Crandall L, et al. Recapitulating and correcting Marfan syndrome in a cellular model. *Int J Biol Sci* 2017;13:588-603.
 24. Cecchi A, Ogawa N, Martinez HR, Carlson A, Fan Y, Penny DJ, et al. Missense mutations in *FBN1* exons 41 and 42 cause Weill-Marchesani syndrome with thoracic aortic disease and Marfan syndrome. *Am J Med Genet A* 2013;161A:2305-10.
 25. Putnam EA, Zhang H, Ramirez F, Milewicz DM. Fibrillin-2 (*FBN2*) mutations result in the Marfan-like disorder, congenital contractural arachnodactyly. *Nat Genet* 1995;11:456-8.
 26. Malemud CJ. Matrix metalloproteinases: role in skeletal development and growth plate disorders. *Front Biosci* 2006;11:1702-15.
 27. de Vos IJ, Tao EY, Ong SL, Goggi JL, Scerri T, Wilson GR, et al. Functional analysis of a hypomorphic allele shows that *MMP14* catalytic activity is the prime determinant of the Winchester syndrome phenotype. *Hum Mol Genet* 2018;27:2775-88.
 28. Shah MH, Bhat V, Shetty JS, Kumar A. Whole exome sequencing identifies a novel splice-site mutation in *ADAMTS17* in an Indian family with Weill-Marchesani syndrome. *Mol Vis* 2014;20:790-6.
 29. Morales J, Al-Sharif L, Khalil DS, Shinwari JM, Bavi P, Al-Mahrouqi RA, et al. Homozygous mutations in *ADAMTS10* and *ADAMTS17* cause lenticular myopia, ectopia lentis, glaucoma, spherophakia, and short stature. *Am J Hum Genet* 2009;85:558-68.
 30. Hubmacher D, Apte SS. *ADAMTS* proteins as modulators of microfibril formation and function. *Matrix Biol* 2015;47:34-43.
 31. Zaucke F, Grässel S. Genetic mouse models for the functional analysis of the perifibrillar components collagen IX, COMP and matrilin-3: Implications for growth cartilage differentiation and endochondral ossification. *Histol Histopathol* 2009;24:1067-79.
 32. Plumb DA, Ferrara L, Torbica T, Knowles L, Mironov A Jr, Kadler KE, et al. Collagen XXVII organises the pericellular matrix in the growth plate. *PLoS One* 2011;6:e29422.
 33. Hjorten R, Hansen U, Underwood RA, Telfer HE, Fernandes RJ, Krakow D, et al. Type XXVII collagen at the transition of cartilage to bone during skeletogenesis. *Bone* 2007;41:535-42.
 34. Li Y, Lacerda DA, Warman ML, Beier DR, Yoshioka H, Ninomiya Y, et al. A fibrillar collagen gene, *Col11a1*, is essential for skeletal morphogenesis. *Cell* 1995;80:423-30.
 35. Van Camp G, Snoeckx RL, Hilgert N, van den Ende J, Fukuoka H, Wagatsuma M, et al. A new autosomal recessive form of Stickler syndrome is caused by a mutation in the *COL9A1* gene. *Am J Hum Genet* 2006;79:449-57.
 36. Majava M, Hoornaert KP, Bartholdi D, Bouma MC, Bouman K, Carrera M, et al. A report on 10 new patients with heterozygous mutations in the *COL11A1* gene and a review of genotype-phenotype correlations in type XI collagenopathies. *Am J Med Genet A* 2007;143A:258-64.
 37. Annunen S, Körkkö J, Czarny M, Warman ML, Brunner HG, Kääriäinen H, et al. Splicing mutations of 54-bp exons in the *COL11A1* gene cause Marshall syndrome, but other mutations cause overlapping Marshall/Stickler phenotypes.

- Am J Hum Genet 1999;65:974-83.
38. Griffith AJ, Sprunger LK, Sirko-Osadsa DA, Tiller GE, Meisler MH, Warman ML. Marshall syndrome associated with a splicing defect at the COL11A1 locus. *Am J Hum Genet* 1998;62:816-23.
 39. Tompson SW, Bacino CA, Safina NP, Bober MB, Proud VK, Funari T, et al. Fibrochondrogenesis results from mutations in the COL11A1 type XI collagen gene. *Am J Hum Genet* 2010;87:708-12.
 40. Gariballa N, Ben-Mahmoud A, Komara M, Al-Shamsi AM, John A, Ali BR, et al. A novel aberrant splice site mutation in COL27A1 is responsible for Steel syndrome and extension of the phenotype to include hearing loss. *Am J Med Genet A* 2017;173:1257-63.
 41. Kotabagi S, Shah H, Shukla A, Girisha KM. Second family provides further evidence for causation of Steel syndrome by biallelic mutations in COL27A1. *Clin Genet* 2017;92:323-6.
 42. Gonzaga-Jauregui C, Gamble CN, Yuan B, Penney S, Jhangiani S, Muzny DM, et al. Mutations in COL27A1 cause Steel syndrome and suggest a founder mutation effect in the Puerto Rican population. *Eur J Hum Genet* 2015;23:342-6.
 43. Jackson GC, Marcus-Soekarman D, Stolte-Dijkstra I, Verrips A, Taylor JA, Briggs MD. Type IX collagen gene mutations can result in multiple epiphyseal dysplasia that is associated with osteochondritis dissecans and a mild myopathy. *Am J Med Genet A* 2010;152A:863-9.
 44. Baker S, Booth C, Fillman C, Shapiro M, Blair MP, Hyland JC, et al. A loss of function mutation in the COL9A2 gene causes autosomal recessive Stickler syndrome. *Am J Med Genet A* 2011;155A:1668-72.
 45. Mäkitie O, Mortier GR, Czarny-Ratajczak M, Wright MJ, Suri M, Rogala P, et al. Clinical and radiographic findings in multiple epiphyseal dysplasia caused by MATN3 mutations: description of 12 patients. *Am J Med Genet A* 2004;125A:278-84.
 46. Baker S, Booth C, Fillman C, Shapiro M, Blair MP, Hyland JC, et al. A loss of function mutation in the COL9A2 gene causes autosomal recessive Stickler syndrome. *Am J Med Genet A* 2011;155A:1668-72.
 47. Borochowitz ZU, Scheffer D, Adir V, Dagoneau N, Munnich A, Cormier-Daire V. Spondylo-epi-metaphyseal dysplasia (SEMD) matriline 3 type: homozygote matriline 3 mutation in a novel form of SEMD. *J Med Genet* 2004;41:366-72.
 48. Wagner T, Wirth J, Meyer J, Zabel B, Held M, Zimmer J, et al. Autosomal sex reversal and campomelic dysplasia are caused by mutations in and around the SRY-related gene SOX9. *Cell* 1994;79:1111-20.
 49. Foster JW, Dominguez-Steglich MA, Guioli S, Kwok C, Weller PA, Stevanović M, et al. Campomelic dysplasia and autosomal sex reversal caused by mutations in an SRY-related gene. *Nature* 1994;372:525-30.
 50. Abou-Samra AB, Jüppner H, Force T, Freeman MW, Kong XF, Schipani E, et al. Expression cloning of a common receptor for parathyroid hormone and parathyroid hormone-related peptide from rat osteoblast-like cells: a single receptor stimulates intracellular accumulation of both cAMP and inositol trisphosphates and increases intracellular free calcium. *Proc Natl Acad Sci U S A* 1992;89:2732-6.
 51. Singh AT, Gilchrist A, Voyno-Yasenetskaya T, Radeff-Huang JM, Stern PH. G alpha12/G alpha13 subunits of heterotrimeric G proteins mediate parathyroid hormone activation of phospholipase D in UMR-106 osteoblastic cells. *Endocrinology* 2005;146:2171-5.
 52. Turan S, Bastepe M. GNAS spectrum of disorders. *Curr Osteoporos Rep* 2015;13:146-58.
 53. Mantovani G, Spada A. Mutations in the Gs alpha gene causing hormone resistance. *Best Pract Res Clin Endocrinol Metab* 2006;20:501-13.
 54. Roelfsema JH, Peters DJ. Rubinstein-Taybi syndrome: clinical and molecular overview. *Expert Rev Mol Med* 2007;9:1-16.
 55. Hennekam RC. Rubinstein-Taybi syndrome. *Eur J Hum Genet* 2006;14:981-5.
 56. Maass PG, Aydin A, Luft FC, Schächterle C, Weise A, Stricker S, et al. PDE3A mutations cause autosomal dominant hypertension with brachydactyly. *Nat Genet* 2015;47:647-53.
 57. Boda H, Uchida H, Takaiso N, Ouchi Y, Fujita N, Kuno A, et al. A PDE3A mutation in familial hypertension and brachydactyly syndrome. *J Hum Genet* 2016;61:701-3.
 58. Vortkamp A, Lee K, Lanske B, Segre GV, Kronenberg HM, Tabin CJ. Regulation of rate of cartilage differentiation by Indian hedgehog and PTH-related protein. *Science* 1996;273:613-22.
 59. Vasques GA, Funari MF, Ferreira FM, Aza-Carmona M, Sentschordi-Montané L, Barraza-García J, et al. IHH Gene Mutations causing short stature with nonspecific skeletal abnormalities and response to growth hormone therapy. *J Clin Endocrinol Metab* 2018;103:604-14.
 60. Gao B, Guo J, She C, Shu A, Yang M, Tan Z, et al. Mutations in IHH, encoding Indian hedgehog, cause brachydactyly type A-1. *Nat Genet* 2001;28:386-8.
 61. Hellemans J, Coucke PJ, Giedion A, De Paepe A, Kramer P, Beemer F, et al. Homozygous mutations in IHH cause acrocapitofemoral dysplasia, an autosomal recessive disorder with cone-shaped epiphyses in hands and hips. *Am J Hum Genet* 2003;72:1040-6.
 62. Klopocki E, Hennig BP, Dathe K, Koll R, de Ravel T, Baten E, et al. Deletion and point mutations of PTHLH cause brachydactyly type E. *Am J Hum Genet* 2010;86:434-9.
 63. Zhang P, Jobert AS, Couvineau A, Silve C. A homozygous inactivating mutation in the parathyroid hormone/parathyroid hormone-related peptide receptor causing Blomstrand chondrodysplasia. *J Clin Endocrinol Metab* 1998;83:3365-8.
 64. Schipani E, Kruse K, Jüppner H. A constitutively active mutant PTH-PTHrP receptor in Jansen-type metaphyseal

- chondrodysplasia. *Science* 1995;268:98-100.
65. Potter LR, Abbey-Hosch S, Dickey DM. Natriuretic peptides, their receptors, and cyclic guanosine monophosphate-dependent signaling functions. *Endocr Rev* 2006;27:47-72.
 66. Hisado-Oliva A, Ruzafa-Martin A, Sentchordi L, Funari MFA, Bezanilla-López C, Alonso-Bernáldez M, et al. Mutations in C-natriuretic peptide (NPPC): a novel cause of autosomal dominant short stature. *Genet Med* 2018;20:91-7.
 67. Wang SR, Jacobsen CM, Carmichael H, Edmund AB, Robinson JW, Olney RC, et al. Heterozygous mutations in natriuretic peptide receptor-B (NPR2) gene as a cause of short stature. *Hum Mutat* 2015;36:474-81.
 68. Moncla A, Missirian C, Cacciagli P, Balzamo E, Legeai-Mallet L, Jouve JL, et al. A cluster of translocation breakpoints in 2q37 is associated with overexpression of NPPC in patients with a similar overgrowth phenotype. *Hum Mutat* 2007;28:1183-8.
 69. Miura K, Kim OH, Lee HR, Namba N, Michigami T, Yoo WJ, et al. Overgrowth syndrome associated with a gain-of-function mutation of the natriuretic peptide receptor 2 (NPR2) gene. *Am J Med Genet A* 2014;164A:156-63.
 70. Teixeira CC, Agoston H, Beier F. Nitric oxide, C-type natriuretic peptide and cGMP as regulators of endochondral ossification. *Dev Biol* 2008;319:171-8.
 71. Krejci P, Masri B, Fontaine V, Mekikian PB, Weis M, Prats H, et al. Interaction of fibroblast growth factor and C-natriuretic peptide signaling in regulation of chondrocyte proliferation and extracellular matrix homeostasis. *J Cell Sci* 2005;118(Pt 21):5089-100.
 72. Bartels CF, Bükülmez H, Padayatti P, Rhee DK, van Ravenswaaij-Arts C, Pauli RM, et al. Mutations in the transmembrane natriuretic peptide receptor NPR-B impair skeletal growth and cause acromesomelic dysplasia, type Maroteaux. *Am J Hum Genet* 2004;75:27-34.
 73. Hachiya R, Ohashi Y, Kamei Y, Suganami T, Mochizuki H, Mitsui N, et al. Intact kinase homology domain of natriuretic peptide receptor-B is essential for skeletal development. *J Clin Endocrinol Metab* 2007;92:4009-14.
 74. Bocciardi R, Giorda R, Buttgeriet J, Gimelli S, Divizia MT, Beri S, et al. Overexpression of the C-type natriuretic peptide (CNP) is associated with overgrowth and bone anomalies in an individual with balanced t(2;7) translocation. *Hum Mutat* 2007;28:724-31.
 75. Miura K, Namba N, Fujiwara M, Ohata Y, Ishida H, Kitaoka T, et al. An overgrowth disorder associated with excessive production of cGMP due to a gain-of-function mutation of the natriuretic peptide receptor 2 gene. *PLoS One* 2012;7:e42180.
 76. Hannema SE, van Duyvenvoorde HA, Premisler T, Yang RB, Mueller TD, Gassner B, et al. An activating mutation in the kinase homology domain of the natriuretic peptide receptor-2 causes extremely tall stature without skeletal deformities. *J Clin Endocrinol Metab* 2013;98:E1988-98.
 77. Al-Qattan MM. Embryology of familial (non-syndromic) brachydactyly of the hand. *J Hand Surg Eur Vol* 2014;39:926-33.
 78. Al-Qattan MM, Al-Motairi MI, Al Balwi MA. Two novel homozygous missense mutations in the GDF5 gene cause brachydactyly type C. *Am J Med Genet A* 2015;167:1621-6.
 79. Farooq M, Nakai H, Fujimoto A, Fujikawa H, Kjaer KW, Baig SM, et al. Characterization of a novel missense mutation in the prodomain of GDF5, which underlies brachydactyly type C and mild Grebe type chondrodysplasia in a large Pakistani family. *Hum Genet* 2013;132:1253-64.
 80. Martinez-Garcia M, Garcia-Canto E, Fenollar-Cortes M, Aytes AP, Trujillo-Tiebas MJ. Characterization of an acromesomelic dysplasia, Grebe type case: novel mutation affecting the recognition motif at the processing site of GDF5. *J Bone Miner Metab* 2016;34:599-603.
 81. Thomas JT, Kilpatrick MW, Lin K, Erlacher L, Lembessis P, Costa T, et al. Disruption of human limb morphogenesis by a dominant negative mutation in CDMP1. *Nat Genet* 1997;17:58-64.
 82. Chang SC, Hoang B, Thomas JT, Vukicevic S, Luyten FP, Ryba NJ, et al. Cartilage-derived morphogenetic proteins. New members of the transforming growth factor-beta superfamily predominantly expressed in long bones during human embryonic development. *J Biol Chem* 1994;269:28227-34.
 83. Hatakeyama Y, Tuan RS, Shum L. Distinct functions of BMP4 and GDF5 in the regulation of chondrogenesis. *J Cell Biochem* 2004;91:1204-17.
 84. Bai X, Xiao Z, Pan Y, Hu J, Pohl J, Wen J, et al. Cartilage-derived morphogenetic protein-1 promotes the differentiation of mesenchymal stem cells into chondrocytes. *Biochem Biophys Res Commun* 2004;325:453-60.
 85. Kuss P, Kraft K, Stumm J, Ibrahim D, Vallecillo-Garcia P, Mundlos S, et al. Regulation of cell polarity in the cartilage growth plate and perichondrium of metacarpal elements by HOXD13 and WNT5A. *Dev Biol* 2014;385:83-93.
 86. Person AD, Beiraghi S, Sieben CM, Hermanson S, Neumann AN, Robu ME, et al. WNT5A mutations in patients with autosomal dominant Robinow syndrome. *Dev Dyn* 2010;239:327-37.
 87. Roifman M, Marcelis CL, Paton T, Marshall C, Silver R, Lohr JL, et al. De novo WNT5A-associated autosomal dominant Robinow syndrome suggests specificity of genotype and phenotype. *Clin Genet* 2015;87:34-41.
 88. Uchimura T, Hollander JM, Nakamura DS, Liu Z, Rosen CJ, Georgakoudi I, et al. An essential role for IGF2 in cartilage development and glucose metabolism during postnatal long bone growth. *Development* 2017;144:3533-46.
 89. Begemann M, Zirn B, Santen G, Wirthgen E, Soellner L, Büttel HM, et al. Paternally Inherited IGF2 Mutation and Growth Restriction. *N Engl J Med* 2015;373:349-56.
 90. Nilsson O, Marino R, De Luca F, Phillip M, Baron J. Endocrine regulation of the growth plate. *Horm Res*

- 2005;64:157-65.
91. Daughaday WH. Growth hormone axis overview--somatomedin hypothesis. *Pediatr Nephrol* 2000;14:537-40.
 92. Fujimoto M, Kawashima Sonoyama Y, Hamajima N, Hamajima T, Kumura Y, Miyahara N, et al. Heterozygous nonsense mutations near the C-terminal region of IGF1R in two patients with small-for-gestational-age-related short stature. *Clin Endocrinol (Oxf)* 2015;83:834-41.
 93. Abuzzahab MJ, Schneider A, Goddard A, Grigorescu F, Lautier C, Keller E, et al. IGF-I receptor mutations resulting in intrauterine and postnatal growth retardation. *N Engl J Med* 2003;349:2211-22.
 94. Dauber A, Muñoz-Calvo MT, Barrios V, Domené HM, Kloverpris S, Serra-Juhé C, et al. Mutations in pregnancy-associated plasma protein A2 cause short stature due to low IGF-I availability. *EMBO Mol Med* 2016;8:363-74.
 95. Bárcena C, Quesada V, De Sandre-Giovannoli A, Puente DA, Fernández-Toral J, Sigaudy S, et al. Exome sequencing identifies a novel mutation in PIK3R1 as the cause of SHORT syndrome. *BMC Med Genet* 2014;15:51.
 96. Dymont DA, Smith AC, Alcantara D, Schwartzentruber JA, Basel-Vanagaite L, Curry CJ, et al. Mutations in PIK3R1 cause SHORT syndrome. *Am J Hum Genet* 2013;93:158-66.
 97. Schroeder C, Riess A, Bonin M, Bauer P, Riess O, Döbler-Neumann M, et al. PIK3R1 mutations in SHORT syndrome. *Clin Genet* 2014;86:292-4.
 98. Nilsson O, Weise M, Landman EB, Meyers JL, Barnes KM, Baron J. Evidence that estrogen hastens epiphyseal fusion and cessation of longitudinal bone growth by irreversibly depleting the number of resting zone progenitor cells in female rabbits. *Endocrinology* 2014;155:2892-9.
 99. Verma N, Jain V, Birla S, Jain R, Sharma A. Growth and hormonal profile from birth to adolescence of a girl with aromatase deficiency. *J Pediatr Endocrinol Metab* 2012;25:1185-90.
 100. Marino R, Perez Garrido N, Costanzo M, Guercio G, Juanes M, Rocco C, et al. Five new cases of 46,XX aromatase deficiency: clinical follow-up from birth to puberty, a novel mutation, and a founder effect. *J Clin Endocrinol Metab* 2015;100:E301-7.
 101. Fukami M, Miyado M, Nagasaki K, Shozu M, Ogata T. Aromatase excess syndrome: a rare autosomal dominant disorder leading to pre- or peri-pubertal onset gynecomastia. *Pediatr Endocrinol Rev* 2014;11:298-305.
 102. Quaynor SD, Stradtman EW Jr, Kim HG, Shen Y, Chorich LP, Schreihofner DA, et al. Delayed puberty and estrogen resistance in a woman with estrogen receptor α variant. *N Engl J Med* 2013;369:164-71.
 103. Bernard V, Kherra S, Francou B, Fagart J, Viengchareun S, Guéhot J, et al. Familial multiplicity of estrogen insensitivity associated with a loss-of-function ESR1 mutation. *J Clin Endocrinol Metab* 2017;102:93-9.
 104. Smith EP, Boyd J, Frank GR, Takahashi H, Cohen RM, Specker B, et al. Estrogen resistance caused by a mutation in the estrogen-receptor gene in a man. *N Engl J Med* 1994;331:1056-61.
 105. Eggermann T. Epigenetic regulation of growth: lessons from Silver-Russell syndrome. *Endocr Dev* 2009;14:10-9.
 106. Tatton-Brown K, Seal S, Ruark E, Harmer J, Ramsay E, Del Vecchio Duarte S, et al. Mutations in the DNA methyltransferase gene DNMT3A cause an overgrowth syndrome with intellectual disability. *Nat Genet* 2014;46:385-8.
 107. Xin B, Cruz Marino T, Szekely J, Leblanc J, Cechner K, Sency V, et al. Novel DNMT3A germline mutations are associated with inherited Tatton-Brown-Rahman syndrome. *Clin Genet* 2017;91:623-8.
 108. Tatton-Brown K, Loveday C, Yost S, Clarke M, Ramsay E, Zachariou A, et al. Mutations in epigenetic regulation genes are a major cause of overgrowth with intellectual disability. *Am J Hum Genet* 2017;100:725-36.
 109. Gibson WT, Hood RL, Zhan SH, Bulman DE, Fejes AP, Moore R, et al. Mutations in EZH2 cause Weaver syndrome. *Am J Hum Genet* 2012;90:110-8.
 110. Tatton-Brown K, Hanks S, Ruark E, Zachariou A, Duarte Sdel V, Ramsay E, et al. Germline mutations in the oncogene EZH2 cause Weaver syndrome and increased human height. *Oncotarget* 2011;2:1127-33.
 111. Cao R, Wang L, Wang H, Xia L, Erdjument-Bromage H, Tempst P, et al. Role of histone H3 lysine 27 methylation in Polycomb-group silencing. *Science* 2002;298:1039-43.
 112. Kurotaki N, Imaizumi K, Harada N, Masuno M, Kondoh T, Nagai T, et al. Haploinsufficiency of NSD1 causes Sotos syndrome. *Nat Genet* 2002;30:365-6.
 113. Luscan A, Laurendeau I, Malan V, Francannet C, Odent S, Giuliano F, et al. Mutations in SETD2 cause a novel overgrowth condition. *J Med Genet* 2014;51:512-7.
 114. Baujat G, Rio M, Rossignol S, Sanlaville D, Lyonnet S, Le Merrer M, et al. Paradoxical NSD1 mutations in Beckwith-Wiedemann syndrome and 11p15 anomalies in Sotos syndrome. *Am J Hum Genet* 2004;74:715-20.
 115. Jee YH, Andrade AC, Baron J, Nilsson O. Genetics of short stature. *Endocrinol Metab Clin North Am* 2017;46:259-81.